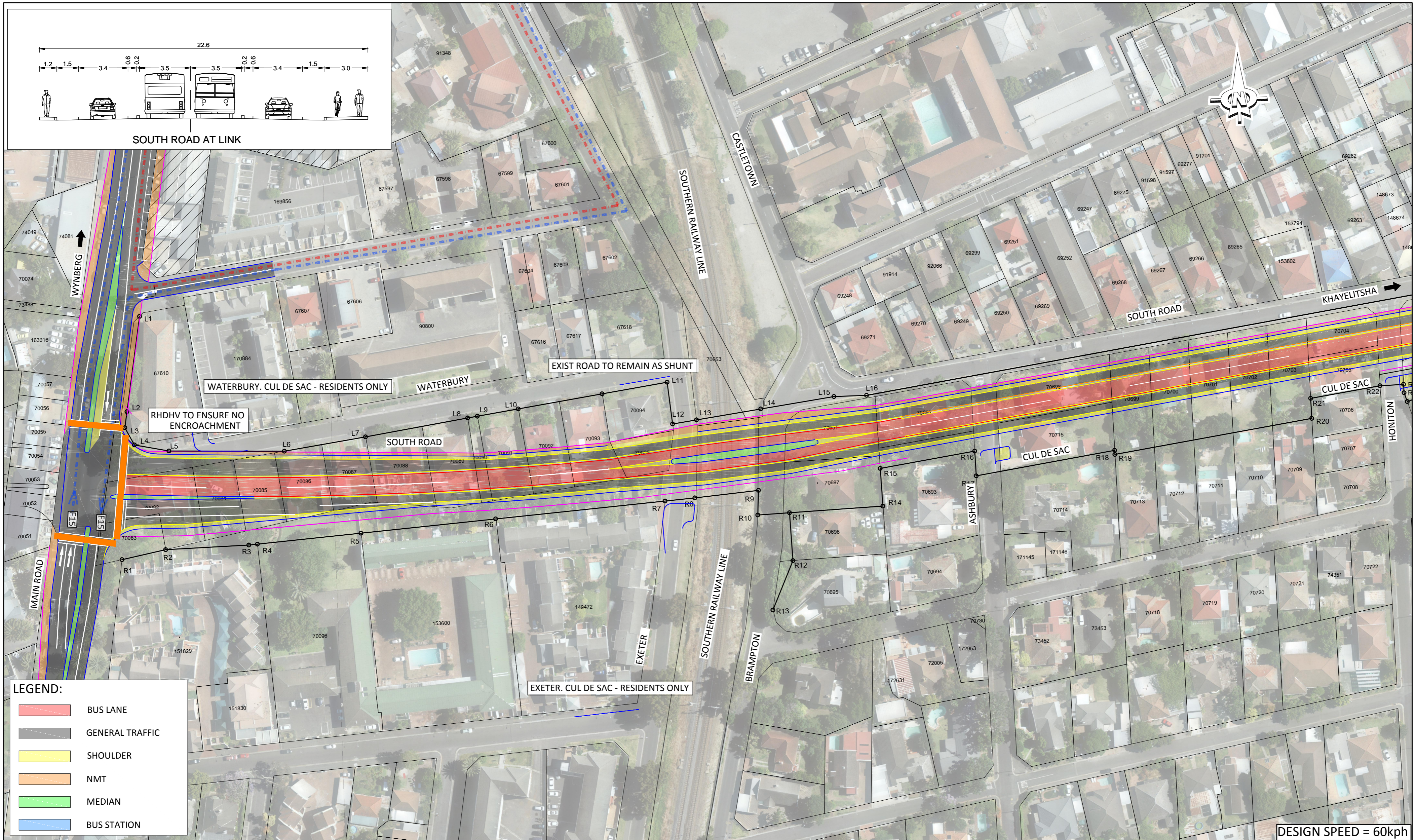


SOUTH ROAD AT LINK



LEGEND:

	BUS LANE
	GENERAL TRAFFIC
	SHOULDER
	NMT
	MEDIAN
	BUS STATION

DESIGN SPEED = 60kph

NO	DATE	DESCRIPTION	CHECK	APP.
02	30-04-2015	Hatching on Main Road and feeder routes added.	SP	
01	20-02-2015	Cul de Sacs added	SP	

SURVEYED	
DESIGNED	SP
DRAWN	JE
CHECKED	SP
APPROVED	CHIEF ENGINEER

MELISSA WHITEHEAD COMMISSIONER : TRANSPORT FOR CAPE TOWN	
DAVE. HUGO DIRECTOR: INFRASTRUCTURE	MADDIE MAZAZA DIRECTOR: PLANNING
RON HAIDEN Pr Eng. MANAGER: PUBLIC TRANSPORT INFRASTRUCTURE	GERSHWIN FORTUNE MANAGER: SYSTEM PLANNING & MODELLING

CITY OF CAPE TOWN

IRT: CONSTRUCTION OF PUBLIC TRANSPORT INFRASTRUCTURE FOR PHASE 2a LANSDOWNE - WETTON CORRIDOR SOUTH ROAD - MAIN ROAD TO HONITON ROAD	
SCALE 1:1000	DISCIPLINE: CE = CIVIL ENG. ARC = ARCHITECT EE = ELEC. ENG
SHEET A2	INFRA. TYPE: ST = BUS STOP S = STATION D = DEPOT B = BUSWAY
	PROJ. Name: IRT - 2a - B - CE - SRC - 4 - S - 02
	STATUS CODES: S = SPATIAL CONCEPT T = TENDER C = CONSTRUCTION A = AS-BUILT

